

- 7 塗藥後，視力會暫時模糊，故此切勿駕駛汽車或操作機器，直至視力清晰為止。  
Your vision may be blurred temporarily after using the eye ointment. Therefore you should not drive a car or operate machinery until your vision becomes clear again.



- 8 如同時使用兩種不同的眼藥膏或眼藥水，應相隔約十五分鐘。  
If you are using two different eye ointments or eye drops, separate the doses by about 15 minutes.



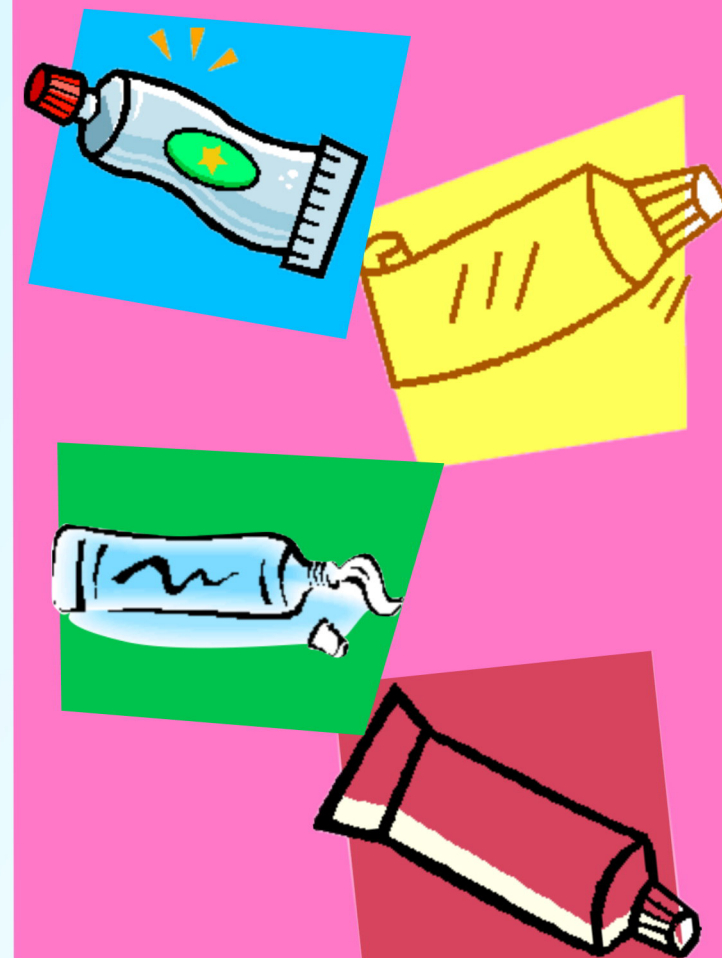
## 注意 Note:

1. 眼藥膏開蓋一個月後不可再使用。  
Discard eye ointment one month after first opening.
2. 切勿使用已變色或過期的眼藥膏。  
Never use discoloured or expired eye ointment.
3. 為防止傳播細菌及避免耽誤病情，切勿與他人共用眼藥膏。  
Do not share your eye ointment with others to avoid transmission of bacteria and delay in treatment.
4. 療程期間切勿佩戴隱形眼鏡。  
Do not wear contact lens during treatment.

- 此藥物指引只供參考之用。  
This information leaflet is for reference only.
- 用藥應按醫生指示。  
Medicines should be used as directed by the doctor.
- 如有疑問請向主診醫生或藥劑師查詢。  
For enquiry, please consult your doctor or pharmacist.
- 切勿將自己的藥物給予他人服用。  
Do not share your medicine with others.

# 眼藥膏使用方法

## How to Use Eye Ointments



# 眼藥膏使用方法

## How to Use Eye Ointments

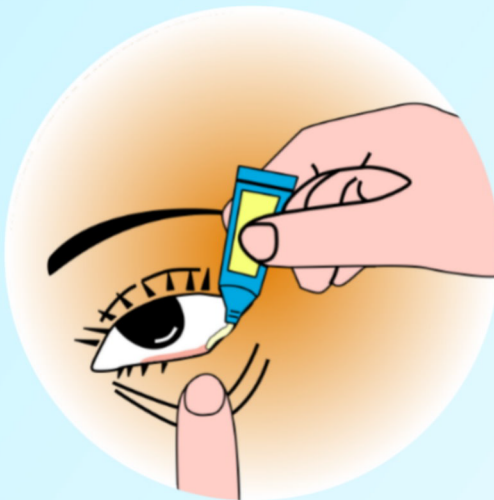
- 1 用清水及肥皂徹底清潔雙手。  
Wash your hands thoroughly with soap and water.



- 2 將頭仰後，眼向上望，輕輕拉低下眼蓋成一袋形。  
Tilt your head backwards, with your eyes looking upwards, gently pull down the lower eyelid to create a pouch.



- 3 擠出約壹厘米眼藥膏在眼袋內，切勿讓眼藥膏筒接觸到眼睛、眼蓋或雙手。  
Squeeze about 1cm of eye ointment into the pouch. Avoid touching the tip of the tube against your eye, eyelid or hands.



- 4 眨眼數次，使眼藥膏均勻分佈眼內，然後閉上眼睛約一至兩分鐘。  
Blink your eyes a few times to allow the eye ointment spread evenly onto the eyes. Then close your eyes for 1-2 minutes.



- 5 用紙巾擦去眼部周圍多餘的眼藥膏。  
Wipe off any excess eye ointment around your eyes with a tissue.



- 6 用紙巾清潔眼藥膏筒並蓋好。  
Clean the tip of the tube with a tissue and recap right away.

